

Clymping Village News



August 2020

10% Discount for additional vehicles booked at same address. *(Applied to lowest price valet)*



bookings@sussexmobilevaleting.co.uk

07425 451439



www.sussexmobilevaleting.co.uk



ONLY Autoglym products used while valeting to ensure the highest quality of finish. Work can be completed rain or shine with pop up cover provided.



Carol Myerscough

07799662954

carolmattey@yahoo.co.uk



*Free Range, locally produced pork sausage rolls and scotch eggs
"Againably the best sausage rolls"*

St Wilfrid's Moonlight Walk Week 2020



5th–12th September 2020
5 or 10 miles

You can help raise money for St Wilfrid's Hospice by participating in our Moonlight Walk. Complete the 5- or 10-mile challenge in your own time, at your own pace.

Sign up to receive your t-shirt and fund-raising pack: Stwh.co.uk/moonlightwalk

To learn about our other fundraising events, please visit Stwh.co.uk

Your Clymping Village News

Welcome to the August 2020 issue, number 79

I hope you are all having a lovely summer. As we find ourselves at home more often these days, my family and I have enjoyed spending lots of time with our neighbours – outdoors and distanced, of course.

In this issue you'll find several items about reopening and restarting in the village. We've also got a couple of articles about upcoming events, including two days to help plant bulbs around the village gateway signs in October, and Clymping Dog Sanctuary's fun dog show on August 23rd.

For discussion of the new incinerator proposed to be built at Ford, see my editorial on page 13 and Amanda Worne's column on page 21.

In the middle of this issue you'll find a guide to creating a household emergency plan. You may wish to detach it, fill it in and keep it somewhere safe.

Colin Humphris has contributed another installment of the always enlightening Science Corner, this time talking about what makes a rainbow. We also have an informative local history piece on the Village Pound from David Robinson.

Turn to page 30 for our new Dog Page, featuring photos of your canine friends, plus a dog-themed quiz!

I'd like to draw your attention to all our local advertisers in this issue, each of whom would appreciate your support.

– *Lisa Eyre, Editor*

Cover photo of the flower display at the Bailiffscourt Hotel by Colin Humphris

Contents

- 5 Upcoming Events
- 7 Community Corner
- 8 New Head Teacher
- 9 Village Hall
- 10 Church Hall
- 11 Parish Council
- 12 Chairman's View
- 13 Editorial
- 15 Household Emergency Plan leaflet
- 19 Beach Report
- 21 District Councillor
- 22 Poem: Covid-19
- 23 County Councillor
- 25 Planning Applications
- 27 Science Corner: Chasing Rainbows
- 28 Local History: Clymping Village Pound
- 30 Dog Page

Please send all submissions and advertising enquiries to **ClympingNewsEditor@gmail.com**. The deadline for the November 2020 issue is 6th November. Submission guidelines can be found at www.clymping.org.uk (click on 'Newsletters').

Clymping Village News does not accept any liability for errors, omissions or claims made by our contributors. The views expressed in the newsletter are not necessarily those of the Parish Council, except where indicated.

St Mary's Church services



Starting in September, St Mary's Church, Clymping, will offer two ways to worship with us on Sundays. We will be continuing our online services, which are available to view each week on our website: www.cyfchurches.org.uk.

We will also open our doors for services inside the church from Sunday, 13th September, at 11 am, alternating weekly with St Mary's, Yapton. Those wishing to attend should contact Rev. Richard Hayes in the week prior to reserve a place (01243 552962). Please see our website for updated information and details on safety measures.

We look forward to worshipping with you in whichever way you feel comfortable.



Pétanque is back

We are back up and running on our terrain at Clymping

Village Hall on Mondays, Wednesdays and Saturdays from 10 am to noon. We have also added a 7 pm evening session on Fridays which will continue into the autumn as long as daylight and the weather allow us to play.

Following the lockdown we are, like many clubs, complying with the guidelines set out by our governing body, Pétanque England. This does entail social distancing, but it also means we can play our sport

in safety. If you decide to come along, everything will be explained in detail to you. You may want to bring your own chair to use between games and, maybe, a flask of tea or coffee.

You will be made to feel welcome, and beginners will be shown how to play. If everyone is sensible and keeps their distance, we can continue to enjoy some fresh air and exercise until restrictions are lifted and normal play can resume. So please come and play pétanque with us.

You can find more information at www.clympingpetanque.simplesite.com.

— Joy Rutter

UPCOMING EVENTS

Bulb planting around Clymping gateway signs

Clymping Parish Council are funding an additional 2,000 bulbs to flower around the Clymping gateway signs on Church Lane by the entrance to the Rudford Estate, as well as the gateway sign on Yapton Road.

The bulbs planted for the trial run on St. Mary's Church Green last year were chosen to provide successional blooming



from January until the end of May. The trial highlighted that more impact and height was needed.

As a result, we have added 300 narcissi that will flower in March and April.

Bulbs for the two additional gateway signs are focused to flower around March and April. We have selected narcissi and species tulips for their flowering time, height and ability to naturalise in grass.

We are scheduling planting on the mornings of Saturday, 3rd October and Saturday, 10th October. **Please e-mail clympingpc@gmail.com if you would like to help with planting** on one or both of those days. Coffee and chocolate brownies will be provided.

– Wendy Robinson, Environment Work Group, Clymping Parish Council

Fun Dog Show on 23rd August

The annual Clymping Dog Sanctuary Fun Dog Show will take place on Sunday, 23rd August, on the sports ground at Clymping Village Hall. The show starts at 11 am, with registrations from 10 am.

This is the biggest fundraising event on our calendar and, as all of our events have had to be cancelled this year, it is more important than ever. The event is completely outdoors and spread over a large area. All social distancing and hygiene measures will be in place to make sure everyone has a wonderful and safe day in the fresh air.

There are rosettes and prizes to be won, as well as many stalls, games, refreshments and a brilliant display by Epic Agility. We'll also have a dog training and behaviour clinic by Happy Dogs. Once again, the Duchess of Norfolk, our patron, will be judging,

alongside Andrew Griffith, MP for Arundel and South Downs.



Clymping Dog Sanctuary in Ford has been operating since 1952 to rescue, treat and rehome dogs in need. It is run completely by volunteers, who work tirelessly to raise funds to keep the sanctuary open.

– Maxine Pears
Clymping Dog Sanctuary

CLYMPING
Dog Sanctuary

FUN DOG SHOW

SPONSORED BY...
Jackie Scott Ltd
Specialist Property Lawyers

Rosettes and prizes to be won.
Best Veteran - Best Rescue - Most Handsome Dog - Prettiest Bitch - Best Trick - Best Junior Handler - Cutest Puppy - Happiest Dog - Best Fancy Dress - Best Biscuit Catcher - Best Condition - Best Doggie Family - Best in Show

Family day out with stalls, prize games, raffles!

Sunday 23rd August 2020
Clymping Village Hall, Crookthorne Lane, Clymping BN17 5SN
11am - 4pm

Clymping Dog Sanctuary Registered Charity Number: 279937

f
FOLLOW US
& to learn more

COMMUNITY CORNER

Care for Veterans plant sale

On Saturday, 11th July, I held a plant sale in May Close in aid of Care for Veterans.

There was fantastic community support, and I can't thank everyone enough for coming to buy plants and other goods and for making it such a successful afternoon. It was great to see so many neigh-



bours and friends. The sale raised an amazing £623.85(!), which will be spent on the support and rehabilitation of the veterans in the charity's care.

A huge thank you goes to Ferring Nurseries,

HMP Ford, Farplants Toddington Nurseries, Morrisons Littlehampton and my mum for the wonderful donations of plants, without which I could not have had a plant sale!

Care for Veterans's longest-standing event, the Summer Fayre, unfortunately had to be cancelled this year due to the current situation with coronavirus. This is

one of the only times the Summer Fayre has not taken place since the Second World War. So, instead, people from Warrington to Worthing held stalls outside their house to help raise the much-needed funds.

Care for Veterans provides long-term nursing care, rehabilitation, respite and end-of-life care to disabled ex-servicemen and women from the RAF, Army, Royal Navy and auxiliary services. For more information, please visit their website: www.careforveterans.org.uk.

– *Christine Gillot*

80th anniversary of Ford attack

The annual service and wreath-laying to commemorate the anniversary of the German air raid on Ford Airfield unfortunately had to be cancelled this year because of the current Covid-19 situation. The service is normally conducted at the war memorial in the grounds of St Mary's Church, Clymping, each year on 18th August at 2:45 pm, the date and time of the raid in 1940. When this magazine went to press, the Littlehampton Branch of the Royal Air Forces Association instead planned to commemorate the anniversary with a simple wreath-laying at the memorial. The memorial reads, 'The Captain, Officers and men of the Royal Naval Air Station Ford, in memory of those who lost their lives as a result of enemy action on the 18th August 1940.'

– *Lisa Eyre*

Guide expedition update

The last time I wrote an article for the *Clymping Village News* in February, I was planning my next ‘bonding’ meeting with the other rangers and guides in my group for our expedition to the Philippines in July 2020.

Well, we just managed to squeeze in that weekend at the guide hall in Uckfield at the beginning of March. The weekend involved some conservation work (cutting down branches and clearing areas), some more Filipino cooking (spring rolls and a dessert of sticky rice with mango), a visit to Millets to view equipment we might need, a quick swim and a visit to Pizza Express.

Then along came Covid-19!!! Very early in lockdown it was decided that our expedition couldn't go ahead in July, as we

had no idea what the situation would be like by then. There were a couple of weeks uncertainty, but we ultimately decided to postpone the trip until summer 2021.

So, I am still fundraising, on the assumption that prices such as our flight will have to increase. I have been doing very well selling unwanted items donated during lockdown decluttering sessions and saving items from entering landfill.

If you have any items you would like to donate, please contact me at banting68@outlook.com and I will be happy to collect them. I mainly collect clothing, DVDs and books but will help you recycle anything. (I have recently sold a bicycle, John Lewis lamp, speakers, children's toys and a vintage powder compact, to name just a few of the items).

Thank you!

– *Ellie Grimwood*



Hello from the new Head Teacher

What a year 2020 has been. The children (and parents) and the staff have coped tremendously with the uncertainty and constant changes that lockdown brought to their education over the spring and the summer. It was also a time to say goodbye to Mrs Llewelyn as she retires. She will be greatly missed, and we wish her all the best and many relaxing days ahead.

I am delighted and honoured to be appointed as the new head teacher for St Mary's. In my experience teaching

and leading in a number of schools in the area, I know the important role the community plays in the life of a thriving school. I'm looking forward to getting to know the children, staff, parents and the wider community here in Clymping.

We now look forward to welcoming back all the children in September to start a new school year together. It might still feel different, as so much of ‘normal’ life does now, but we are all very excited to begin the next phase of our journey together.

– *Aaron Morrissey, Head Teacher,
St Mary's School, Clymping*

VILLAGE HALL

Lin Impett explains how the hall is reopening in a secure way.

Clymping Village Hall is gradually reopening, and we can begin to welcome you back to us.

We have worked hard to make the hall Covid secure to protect our hirers and users. We are operating in a secure way, as we want to give you a place where you can relax and safely participate in the classes available. The restrictions still prevent some uses of the hall, however.

We have organised entrance and exit routes, and increased hygiene facilities. There are hand sanitisers for everyone to use in the entrance hall, and we have provided cleaning equipment ready for hall hirers to use in between sessions. You'll find information posters on display to ensure the safest processes are used.

To comply with Covid protective requirements, we have removed curtains in the main hall, along with soft furnishings. We have provided paper towel dispensers in the toilets to replace the electric hand dryers. The kitchen remains out of use for the time being, but we are making slow and steady steps back to enjoying our community hall as it should be.

The Village Hall is able to accommodate class sessions of 20, including the hirer. This allows for a two-metre distance between people whilst standing. For classes

involving floor exercises, the number of people is limited to 16 to maintain appropriate social distancing.

To book the hall for a class, please contact Bev at Clympingvh@gmail.com.

Unfortunately, social restrictions prevent us being able to book parties. At press time wedding receptions were not yet permitted by law, but when they are we will be ready.

Football matches are now being played

on the hall grounds, albeit without changing room access, so the players have to take their mud home with them! Stool-ball games have also returned.

The green is home to cricket matches, and villagers have

enjoyed watching from the comfort of their own deckchairs while munching on homemade picnics. The last match of the season is on 5th September.

Clymping Pétanque Club is playing socially distanced games on the new terrain.

You can find out about all events happening at the Village Hall by visiting our website and viewing the online calendar: <https://sites.google.com/site/clympingvh/>.

Not all of our regulars have been able to return to their sessions yet, but we will be welcoming them back as soon as they are ready.



CHURCH HALL

Chris Keeling writes that the hall is gradually reopening.

We are aiming to reopen the Church Hall for activities during August, with more in September.

Following Government guidelines, we have one entry and one exit, which will be clearly marked. Hand sanitizers will be in place. We will mark out two-metre and one-metre distancing on the floor, and there will be an activity area to be used. Users will be responsible for meeting the Government guidelines for their activity, including social distancing, sanitizer use and so forth.

We have one activity restarting in August: Arundel Pilates (Carole Barker; carole@arundelpilates.co.uk; 01903 882734). Flipitas Gymnastics preschool classes will possibly restart at the end of

September (Lesley Couch; secretary@flipitasgymnasticsclub.co.uk; 07707 284790). If you are interested in these activities, please get in touch with the individuals listed.

Other regular activities, such as the Aspire Adult Education art class, Arundel Art Society, and Parish Council meetings, are awaiting further developments in the Government directives.

If anyone is planning a small meeting of up to 30 people, please get in touch with me (01243 585584; chrismkeeling@btinternet.com) and we can discuss how to meet within the present Government guidelines. But be aware that these can change very quickly!

Prevent burglary with Neighbourhood Watch

As lockdown restrictions ease and we are out of our houses more often, Neighbourhood Watch is reminding people of the increased risk of burglary.

In addition to keeping an eye out for your area, Neighbourhood Watch recommends implementing a set of safety measures for your home, including locking your windows, leaving indoor lights on a timer, double locking your doors and leaving

exterior lights on a sensor setting. Most domestic burglaries are committed by opportunists, and homes

with these measures in place are almost half as likely to be burgled as those with no security devices.

You can find a comprehensive security checklist for

burglary-proofing your home, as well as information on setting up a Neighbourhood Watch group, at www.ourwatch.org.uk. – Lisa Eyre



PARISH COUNCIL

News and notes from Val Knight, Parish Council Clerk

Council meetings

Meetings of Clymping Parish Council start at 7:30 pm and are currently being held remotely using Zoom. The remaining scheduled meeting dates for 2020 are as follows: **22 September** and **24 November**.

Details of how to join the Zoom meeting will be available by written request (including e-mail) to me by 5 pm on the day before the meeting. Alternatively, written/

e-mailed questions on matters on the agenda may be submitted by the public, and these should also reach me by 5 pm on the day before the meeting (contact details below).

A full complement of councillors

I am pleased to say that the remaining vacancy on the Council has now been filled, with the co-option of Cllr Adele Hodgson at the meeting of Council on 28th July.

Parish Council Members

Henry Burrell (Vice-Chairman)
Atherington Farm, Climping Street
BN17 5RN; 01903 718755

Ann Findlay
5 Cropthorne Drive, BN17 5GG
01903 732574

Christine Gillott
35 May Close, BN17 5TF
07931 125854

Adele Hodgson
11 The Beaches, Waterford Gardens
BN17 5PQ; 07766 021281

Colin Humphris (Chairman)
16 Cropthorne Drive, BN17 5GG
01903 733848

Harry Ward
4 Cropthorne Drive, BN17 5GG
01903 730754

Stuart Weatherley
14 May Close, BN17 5TF
01903 713007

Parish Clerk

Val Knight
33 The Ridings,
East Preston, BN16 2TW
01903 771922
E-mail: clympingpc@gmail.com

Parish Council website
<http://www.clymping.org.uk/>

CHAIRMAN'S VIEW

Colin Humphris discusses issues that are important for the village in the continuing story of our uncertain times.

Fortunately, we appear to have been spared the worst of the pandemic here in West Sussex, but I know these remain anxious times for many. We need to remain vigilant and follow Public Health England's advice on social distancing, face coverings and so forth, especially as visitors descend in numbers to our beaches and nearby coastal towns and shopping centres.

For myself, the easing of lockdown has provided the opportunity to be with my grandchildren again, even if only in the garden and suitably distanced. It's great to be back in the gym and even better to have had a haircut! I guess we all have to adapt to the current circumstances.

This is also true for the Parish Council. We have held two Parish Council meetings on Zoom, and it has been pleasing to see the number of residents who have logged in to contribute at the public opportunity and to listen to the deliberations. I suspect virtual meetings are here to stay into the autumn.

This facility is also available for West Sussex County Council (WSCC) and Arun District Council planning committees, and I want to encourage all who have expressed their opinions on key planning applications such as the Ford incinerator or the Ford housing, to contribute to the discussions as public speakers, or to watch the debates, given that they are so important to you and the village. I know there was a

significant and well-organised community voluntary effort to encourage comments on the incinerator.

In July, the Parish Council took part in the first phase of a study of options for upgrading the A259 from Flansham to Littlehampton that hopefully will lead to real improvements to all the major junctions in Clymping. WSCC believe they have access to government funding for this work, and some funding may also be derived from housing developments under consideration.

In September, I will be present at a meeting hosted by our MP, Nick Gibb, with the Environment Agency to discuss future plans for the beach. Councillors will also be meeting the developers of the field to the south of Horsmere Green Lane to understand their plans and to make them fully aware of the issues faced by the village. We will also be scheduling a discussion with the operators of the offshore Rampion windfarm, who are considering an expansion that could involve bringing power ashore at Clymping.

A word of thanks to Wendy and David Robinson, who have tidied the Pound in Clymping Street. Great work! The Council agreed funding to restore the Pound, including the benches and the historic notice signs on the wall. Thanks also to Hamish Neath-

ercoat, who gave up a day to help restore the village gateway signs to pristine white. The traditional finger post at the head of Clymping Street is undergoing refurbishment.

Finally, I want to welcome Adele Hodgson as a co-opted member of the

Parish Council. We now have a full complement of councillors keen to help you and look after the village's interests.

Please stay safe and well.

Colin Humphris is Chairman of Clymping Parish Council. Tel: 01903 733848

EDITORIAL

Our village deserves congratulations for our efforts to oppose the proposed incinerator in Ford. But there is more to do.

By Lisa Eyre

I would like to thank Clymping residents Wendy Robinson and Alan Lovell for organising the recent community effort to object to the massive new waste incinerator proposed to be built at Ford. Thanks also go to the volunteers who distributed leaflets and made posts on social media, and of course to those residents who took the time to register their objections with West Sussex County Council (WSSCC).

Over the weekend of 1st–2nd August, volunteers distributed leaflets across Clymping that detailed the detrimental effects the incinerator would have on our village. The leaflets encouraged residents either to object to the proposal on the WSSCC planning website, or to fill in their details on the leaflet and post it in the community

desk (asparagus stand) next to St Mary's Church, to be forwarded to WSSCC.

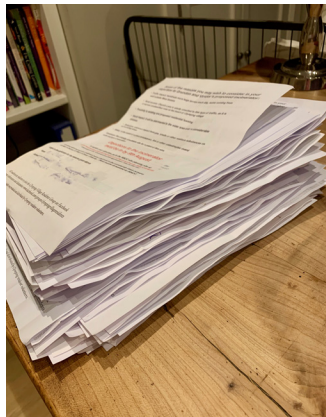
An amazing 79 forms were submitted via the community desk in addition to those posted directly online. In total,

more than 1,100 objections were registered by the public from Clymping and the wider area.

Clymping Parish Council wrote an eloquent and persuasive objection. These comments, and those from all the other local parish councils, Arundel Town Council, the Campaign for Rural England, the Trustees of Arundel Castle and other organisations, can be viewed at

<https://westsussex.planning-register.co.uk/application/WSSCC/036/20>.

The incinerator is part of a planning application made by Ford Energy from Waste, Grundon Waste Management



Forms submitted via the community desk. Photo courtesy Wendy Robinson

and Viridor Waste Management, and is officially called an ‘energy recovery facility and a waste sorting and transfer facility’. The proposal would create a new building that would be as tall as a 16-storey block of flats, with an 85-metre high chimney for the emissions from the burnt waste material. If approved, the facilities would be adjacent to the planned 1,500-home development on Ford Airfield. They would be visible for miles around. Hundreds of additional heavy goods vehicles, potentially travelling from a great distance, would flow from the A259 up Church Lane every day to access the site.

Although our community deserves congratulations for organising so effectively, this was only round 1. WSCC will now process all the comments they have received. We understand that their Planning

Committee will meet in December to decide whether to grant planning consent. In the meantime, Arun District Council (ADC) will meet in September to consider whether they will support or oppose the application, and this will have a bearing on WSCC’s decision.

So what else can residents do? Alan Lovell, who is a former County Engineer and Surveyor for WSCC, suggests we get in touch with our local representatives on both WSCC and ADC so that they will understand the strength of feeling against this imposition on our community. Their names and contact details can be found on page 24. You can also contact members of the WSCC Planning Committee (find their names and contact details at <https://westsussex.moderngov.co.uk>).

The views expressed in this article are my own.

EMERGENCY PLANS

West Sussex County Council encourages you to be prepared.

If there were an emergency in our local area that meant you suddenly had to evacuate your house, or to remain indoors for an extended time, would you be prepared?

West Sussex County Council have put together the leaflet reproduced on pages 15–18 to help you think about items and information you may need to have on hand in case of emergency.

For example, it can be very helpful to create a ‘grab bag’ containing essential

items that will enable you to manage until help arrives. The leaflet lists important radio and Internet resources to help you stay tuned in to developments, as well as telephone numbers for emergency services. It also provides spaces for you to fill in details important to you: your medication, household contacts, and your plan for connecting with family, as well as insurance details and other useful information.

You may wish to detach the leaflet, fill it in and keep it in a safe place. – *Lisa Eyre*



HOUSEHOLD EMERGENCY PLAN

Emergencies can affect the county with little or no notice.

Being prepared can help reduce the effects on your life and your loved ones; reduce the need for support from others and enable you to support the vulnerable in your community.

Disruption to essential services such as water, gas and electricity, regional and national travel and telecommunications are all ways an emergency can affect our everyday lives.

A crisis happens when we least expect it.

GO IN. STAY IN. TUNE IN.



www.westsussex.gov.uk/emergency



If you are not involved in an emergency but are close by or believe you may be in danger, in most cases the advice is:

GO IN. STAY IN. TUNE IN.

Station	Frequency	Website
BBC Sussex	104.8 & 95.3 FM	www.bbc.co.uk/bbcsussex
Heart	97.5 & 96.7 FM	www.heart.co.uk/sussex
Spirit FM 96.6	102.3 & 106.6	www.spiritfm.net

Creating an emergency box/bag

Be prepared. Creating an emergency grab bag will help locate essential equipment quickly in an emergency. For ideas on what to include in your grab bag visit our website page entitled "What you can do to to prepare for an emergency". **Some suggested items are:**

Torch and spare batteries	tick <input type="checkbox"/>	First Aid kit	<input type="checkbox"/>
Battery powered radio and spare batteries	<input type="checkbox"/>	List of useful contact numbers	<input type="checkbox"/>
Candles / matches	<input type="checkbox"/>	Toiletries	<input type="checkbox"/>
Copy of this plan	<input type="checkbox"/>		

In case you are unable to leave the house it is suggested you should have:

Bottled water	tick <input type="checkbox"/>
Ready to eat food (tinned)	<input type="checkbox"/>
Bottle/tin opener	<input type="checkbox"/>

In case you are stuck in your car it is suggested you should have:

Blankets	tick <input type="checkbox"/>
Torch and spare batteries	<input type="checkbox"/>

Location of where emergency box/bag is kept

List of current medication

Medication name	Dose	When taken	Who takes it

Once completed it would be advised to laminate and then store in a safe

Complete the following sections and keep it in a safe place where all in your household can easily access it

Household contact details

Name

Mobile

Work

If you are evacuated is there somewhere we can go? Friends or family?

Name

Mobile

Work

If you can't contact each other, where should you meet / or who should you leave a message with?

Name

Mobile

Work

Who will be responsible for picking up the children from school? (if applicable.)

Emergency telephone numbers

Emergency services

NHS out-of-hours

Police non-urgent
Local Police Station

Power cut

Local authority

Doctor

School

Other

Important documentation and information

Insurance company name

Insurance phone number

Home insurance

Policy number

Other (Please list)

place, e.g. upstairs (if available) and provide a copy to family or friends.

Have you turned off the following? Who is responsible?

	tick	Where are these utilities located at your property?
Gas	<input type="checkbox"/>	
Electricity	<input type="checkbox"/>	
Water	<input type="checkbox"/>	

If you are in a position where you are able to offer help to your community start by checking that your neighbours are alright.

Name	Address	Telephone	Mobile

Useful websites

West Sussex County Council

www.westsussex.gov.uk

East Sussex County Council

www.eastsussex.gov.uk

Environment Agency

www.environment-agency.gov.uk

BBC Sussex

www.bbc.co.uk/sussex

National Flood Forum

www.floodforum.org.uk

Sussex Resilience Forum

www.sussexemergency.info

Other useful information

BEACH REPORT

The Environment Agency offers an update on the beach.

We completed safety works to the beach in June 2020. This involved removing a number of timber groynes and structures which were dangerous to beach users.

We have received a range of correspondence regarding these structures over the last few months. Some people were concerned about the dangers they posed, while others were worried that their removal would affect the future of the beach.

In deciding whether or not to remove groynes from the beach, we first completed a survey to gauge how effectively the groynes were trapping shingle. In this case, many proved to be beyond repair and so were removed.

As the beach changes daily, we are still uncovering debris. We will continue to carry out frequent public safety risk assessments of the beach and its structures throughout the year. We will keep warning signs in place and ask that

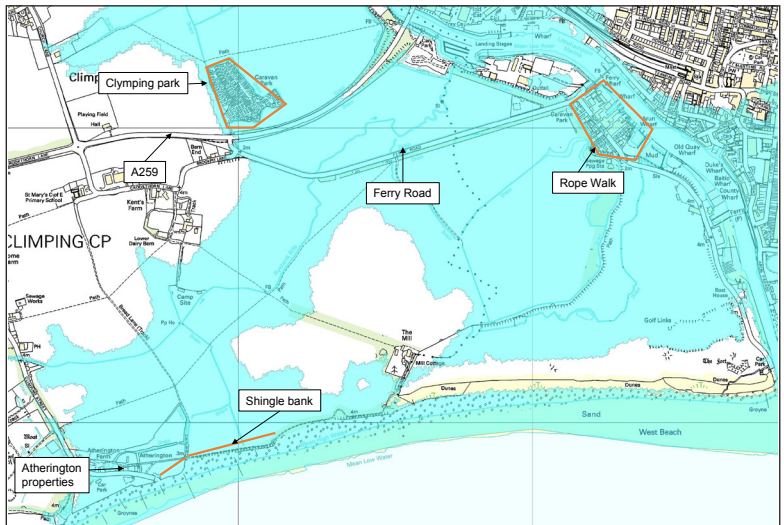
everyone continues to be vigilant while on the beach.

Storm modelling

Since March our consultants have undertaken computer modelling to replicate the events of Storm Ciara. This will help us understand the various scenarios that would lead to property flooding.

We have been able to determine that there would need to be at least twice as much water as that seen in the floodplain during Storm Ciara to flood properties at Rope Walk. The main flood risk to this community remains from the River Arun.

Our storm modelling concluded that placing a one-way flap valve on the culvert



Area map showing tidal flood plain for a 1-in-200-year event



Environment Agency operatives completing public safety works in June

under the A259, would prevent water travelling north of the road and increase the levels in the floodplain south of the A259 by a few centimetres in an event of a similar scale. It also determined that pumps placed at Littlehampton Marina during the event had minimal impact on lowering the water levels.

Next steps

With the groynes coming to the end of their lives and the beach in a more set back position, we are unable to maintain the defences in the same way as before. In looking at our next steps we will continue to work with community groups, partners, landowners and other key stakeholders to ensure everyone has

an opportunity to have their say and understand the effects of coastal change at Clymping.

Contact

If you have questions or comments regarding Clymping beach, please e-mail SSDEnquiries@environment-agency.gov.uk.



Creative Heart

will be a not-for-profit, vibrant community hub and arts cafe in Littlehampton at

the former Tamarisk Centre. We aim to tackle loneliness, inspire creativity and improve wellbeing.

Would you like to help support us?

Please visit our website at <http://creativeheart.org.uk> or find us on Facebook, Instagram and Twitter.

QUIZ ANSWERS

These are the answers to the anagrams found on page 30.

NO PEEKING!

MASTIFF; GREAT DANE
COLLIE; SHELTIE; POODLE;
DACHSHUND; SAINT BERNARD;
SETTER; ALSATIAN; FOXHOUND;
SPANIEL; LABRADOR; RETRIEVER;
CHARLES; FOX TERRIER;
PEKINESE; POMERANIAN; KING
ABERDEEN; BULLDOG; CAIRN;

DISTRICT COUNCILLOR'S NEWS



Arun District Councillor Amanda Worne discusses the proposed incinerator.

Many of you are aware of the proposal of a monstrous incinerator in Ford. The building itself is large enough to fit Butlin's inside, and the chimney is taller than Chichester Cathedral. It will blot our landscape for many miles around.

Viridor and Grundon already have permission for a smaller waste-disposal plant on the site but have now put in an application for something twice as large. We don't even have a requirement for it, according to West Sussex County Council Waste Plan, as a similar incinerator is already going to be built in Horsham.

Not only will we be taking in all sorts of waste from many miles around, but this incinerator will also discourage efforts to recycle, which, according to the Environment Bill, is something we should all be making great efforts to support. There will be an increase in larger, heavier lorries, further burdening our already heavily used rural roads, and more pollution in our atmosphere.

A development of 1,500 homes is proposed on Ford Airfield, and I ask myself who would want to buy a house next to that!

We as a community have written hundreds of letters of complaint. We have also formed a petition, and various organisations and local councils have submitted their objections too. Let us hope when this comes to WSCC Planning Committee in a few months' time we have

a chance again to raise our objections and finally put this hideous monster to bed once and for all.

On a more positive note, over the past month or so we have seen the reopening of some of our small businesses and local trades, which is really good news for us all.

I have occasionally taken my youngest daughter to her work at the reopened Bailiffs Court Hotel. This is often the highlight of my day because of the stunning wild meadows that grace some of the land surrounding the hotel. The first time I saw the meadows, they literally took my breath away. The colours were so vibrant, and they were buzzing with pollinators busy about their work.

In a time of such uncertainty and unsettlement, I find that these flowers offer hope and positivity, helping us remember that the world is still turning and good things are still happening everywhere if we look for them.



Covid-19

by Lin Lundie

.....behind the ruined beach

the silence
even the sea
is in mourning for the life we have lost

.....sunshine, brightness

nature says look
it is spring...do not cry
the planet will recover, is still blue

we are both ill
but still able to water the greenhouse
one or other of us
hoping to grow beans, peas, tomatoes here in paradise

.....grandchildren work on examinations
.....in a world in ruins
.....at the kitchen table

and this too shall pass my grandmother always told me.
and it did, a world war, divorce, hard times
keep working, keep hoping, keep loving, keep forgiving

now.....one foot in front of the other
water the plants
the birds can hear themselves sing

and we adjust our philosophy.

COUNTY COUNCILLOR'S REPORT



West Sussex County Councillor Jacky Pendleton keeps in touch on issues that are important to local residents.

It's nice to be in touch again following what has been an extremely demanding period of our lives. On an optimistic note, we appear to have been very lucky down here near the coast, and although we have obviously had some very sad moments with friends and family, it appears that we have been very careful and the loss of loved ones has been kept to a minimum. Let's continue the good work!

The lifting of lockdown more and more brings not only a degree of relief but also some concerns, mostly notably for those who are close to leisure facilities like the beach, the parks and open spaces, and our walking routes. Social distancing in public places has been hard, given that we have had a lot of incomers from further afield who do not live in such nice places as we are lucky enough to enjoy. However, when those visitors abuse our facilities, we have every right to get cross, and unfortunately such abuse has been happening to varying degrees, particularly on and near our beaches.

Our waste services have tried their very best to keep pace with clearance of rubbish bins, stepped up by more than double. In addition, visitors have sometimes made our roads congested and have sometimes not respected our parking restrictions, making it more and more difficult for

locals to enjoy our normal facilities.

As a result, some of my residents have asked for further parking restrictions on our roads, which is perfectly understandable, but it is important for everyone to understand that further permanent restrictions are governed by legal procedures which have to be followed.

So I thought it timely to remind you all of the process you have to go through in order to obtain a Traffic Regulation Order if you believe that further permanent parking restrictions are called for. A Community Highways Scheme initiative can make our roads safer, so I list below what you need to do to progress an order for this, be it for further road markings or for traffic-calming measures.

Processes for applying for Traffic Regulation Orders and Community Highways Schemes

Traffic Regulation Orders (TROs):

- Residents to raise a petition supported by the majority of the people in the location/locations to which the TRO will apply
- Residents to gain the support of Clymping Parish Council
- Residents to gain the support of the West Sussex County Councillor (Jacky Pendleton)

- Residents to gain the support of any other relevant person (eg MP, emergency services, bus services, District Council, local businesses, residents' organisations)
- Residents to apply for the TRO to West Sussex County Council (WSSCC) with the support of the local County Councillor. An online application form is available at <https://www.westsussex.gov.uk/roads-and-travel/traffic-regulation-orders/about-tros/apply-for-a-tro/>.

Community Highways Schemes (CHSs):

- Members of the community identify a highway concern (eg traffic calming, village centre enhancement, cycling facility, crossing facility, speed limit, junction improvement)
- Consideration should be given to the implications of proposals on other local communities
- Community members gain the support of Clymping Parish Council
- Community members gain the support of the West Sussex County Councillor

(Jacky Pendleton)

- Community members gain the support of any other relevant person (eg MP, emergency services, bus services, District Council, local businesses, residents' organisations)
- Residents to apply for the Community Highways Scheme Initiative to WSSCC with the support of the local County Councillor. An online application form is available at www.westsussex.gov.uk/leisure-recreation-and-community/supporting-local-communities/apply-for-a-community-highways-scheme/#/make-an-application.

I would like to wish you all the very best over the next few months as hopefully lockdown continues to ease up.

In the next edition, I will talk more about our environment, particularly the invasion of our space by industrial and commercial businesses who seek to disturb our village life and the quality of the air that we breathe.

Locally elected representatives

Below are names and contact details for councillors representing Clymping at the district and county level. For a list of Parish Councillors, see page 11.

Arun District Council

Amanda Worne

07955 723232

cldr.amanda.worne@arun.gov.uk

Henry Jones

07715 582191

cldr.henry.jones@arun.gov.uk

West Sussex County Council

Jacky Pendleton

07768 200539

jacky.pendleton@westsussex.gov.uk

PLANNING APPLICATIONS

The following planning applications for Clymping are undecided by Arun District Council as of 17th August 2020.

Arun DC ref.	Location	Proposal
CM/27/20/ DOC	Langford Horsemere Green Lane Climping BN17 5QZ	Approval of details reserved by condition imposed under ref CM/64/19/PL relating to Condition Nos 3 – materials & finishes, 4 – Construction Management Plan, 9 – pre-commencement site meeting, 19 – foul drainage and 20 – contamination
CM/26/20/AG	Hobbs New Barn Gravetts Lane Climping BN17 5RE	Application for prior notification for a proposed portal framed barn
CM/25/20/PL	Climping College The Mill Climping Street Climping BN17 5RN	Excavation of pond & construction of flood defence gates & earth bunds. This application affects the setting of listed buildings and is also in CIL Zone 5 (zero rated) as ‘other development’.
CM/23/20/ CLP	Sadlers Cottage Brookpit Lane Climping BN17 5QU	Lawful development certificate for the proposed change of use from a dwelling house (C3 Dwelling house) to children’s home (C3(b)). This application is not CIL Liable (zero rated) as other development.
CM/20/20/PL	Woodpecker Camping Field Crookthorne Lane Climping BN17 5RG	Use of site approved for tent pitches (CM/7/18/PL) to be used for caravan/ motor home camping and tent pitches and associated changes to approved layout.

continued on page 26

The following planning applications for Clymping and Ford are pending a decision by West Sussex County Council as of 17th August 2020.

Application no.	Location	Proposal
WSSCC/066/19	Climping College The Mill Climping Street Climping BN17 5RN	Replacement of existing below ground drainage to provide an improved foul and waste drainage system for existing dwellings at the property, comprising the installation of new pipes, a new bio-digester and field drain
WSSCC/036/20	Ford Circular Technology Park Ford Road Ford, Arundel BN18 0XL	Demolition of existing buildings and structures and construction and operation of an energy recovery facility and a waste sorting and transfer facility for treatment of municipal, commercial and industrial wastes, including ancillary buildings, structures, parking, hardstanding and landscape works

To find out about current planning applications made to Arun District Council, visit www.arun.gov.uk/weekly-lists.

For applications made to West Sussex County Council, go to <https://westsussex.planning-register.co.uk/Search/Advanced>.
(For each website, select the parish from the drop-down box.)

Definitive Map Modification Order affecting beach footpath

West Sussex County Council is proposing that part of footpath 829 becomes a restricted byway that will allow a right of way for those on foot or riding a horse or a pedal cycle, and for other vehicles as long as they are not mechanically propelled.

The section of the footpath affected runs from Climping Beach Car Park east along the top of the beach for approximately 840 metres, when it turns inland, passing between Clymping Mill and

Littlehampton Golf Course, until it meets footpath 174.

You can view the documents provided by WSSCC on the Clymping Parish Council website: www.clymping.org.uk.

Objections/representations to this must be sent by **27th August 2020** to the Director of Law and Assurance, County Hall, Chichester, West Sussex, PO19 1RQ or to legal.services@westsussex.gov.uk (quote ref CC803.14421).

Science corner

Chasing rainbows

Colin Humphris explains the science behind the colourful symbol of our time.

Today the rainbow and the rainbow colours are synonymous with our support of front-line NHS workers and of cultural diversity. Typically they are described as the seven colours you can remember through the mnemonic 'Richard Of York Gave Battle In Vain': red, orange, yellow, green, blue, indigo and violet. But what causes the colours that we see?

We see no colour in the dark, so we know this has something to do with light. Light comes directly from the Sun (daylight or white light) or from burning energy that has ultimately come from the Sun to create it (artificial light).

Solar energy passes across 93 million miles of the vacuum of space to reach us, and we are all familiar with the immediate direct feeling of warmth in sunshine (infrared) and the need to protect ourselves from skin damage (ultraviolet). This is radiation. It is called electromagnetic radiation, and it has the characteristics of a wave and is defined by its wavelength, the peak-to-peak distance. It travels very quickly through space at 186,000 mph.

The Sun emits radiation across a mindboggling range of wavelengths, from the infinitesimally short, measured as billionths of a metre (gamma rays), to the longest, which is measured in thousands of metres (radio waves). The shorter the wavelength, the more energetic the radiation, which why we have to be so careful with X-rays and ultraviolet light, because of the damage that excessive exposure can cause. Longer, less energetic wavelengths like microwaves and radio waves are of course jolly useful.

Our eyes detect a very narrow band of this spectrum that we call visible light. We see the light energy that is reaching our eyes. Its wavelength ranges from 40 millionths of a metre to 70 millionths of a metre. This may seem a small range, but it actually explains everything about the



A double rainbow, as seen from Crophthorne Drive

coloured world in which we live. Different animals see slightly different ranges – so, for instance, those pesky mosquitoes can see your body heat (infrared) even when you think it is dark.

When light reaches a liquid or solid

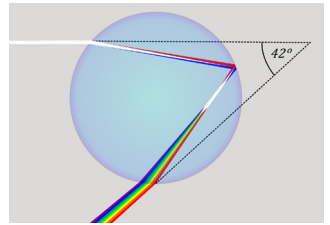
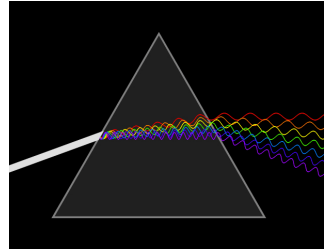
material – something denser than air – it can be reflected from the surface, transmitted through the object, absorbed by the object, scattered or a little of all of these, depending on the material. The material changes the light we see coming from it. We make mirrors that are perfectly smooth and silvered to ensure perfect reflection and no transmission. If the surface is uneven or rough, the light is scattered, so no perfect image is seen. It may look matt, so you might assume nothing is reflected. It turns out that blue light is scattered the most, which is why the sunlit sky is blue and not the black of space. Our eyes are receiving the blue light scattered from atmospheric particles when we look at the sky.

When light is transmitted through a denser material like glass or water, it is slowed, and this has the effect of bending or refracting the light. This is the effect you see when looking into a swimming pool, when the bottom apparently rises up the further away you look. The shorter the wavelength, the more the light is bent, and this gives rise to Isaac Newton's classic experiment with a prism, through which he created the rainbow of colours from white light. The refracted white light is split into its component colours. It isn't actually seven distinct colours; it's a continuous spectrum of colour, but this is how our brains interpret it, and perception is everything.

If light with the full range of visible

wavelengths reaches our eyes, we see white light. If some of this range of colours doesn't reach our eyes for whatever reason, you start to generate the rich array of different colour blends, shades and textures that most of us are lucky enough to see in our daily lives.

Here is the first clue to the rainbow. When you are standing with the Sun above and behind you and you look towards water droplets in rain or spray, light is being refracted as it enters the droplets. Most goes straight on through the other side, but at



a critical angle of 42 degrees, the refracted light is reflected internally back and out to the observer. It is this angle that creates the characteristic arc of the rainbow.

Unfortunately there are two other consequences. What you perceive as the rainbow and its position is solely dependent on where you are standing relative to the Sun and the water droplets. No two people can therefore see exactly the same rainbow. It does not have a single physical presence, no single end and therefore no pot of gold.

Of course, however, a picture of a rainbow can look the same to all, which is why it is such an effective and striking symbol of our time.

Local history

Clymping Village Pound

We asked Clymping resident David Robinson to explain the significance of one of our village's historical landmarks, which is up for restoration.

The Village Pound is situated at the northeastern end of Climping Street. It has a very long history. Pounds in the Climping area were first documented in the 16th century, but as pounds are known to have existed from the early medieval period, it is possible that this one was in use before the Norman Conquest and so may claim to be one of the village's oldest features.

It is a reminder that the farmland that surrounds us has been populated and cultivated for a very long time.

Any cattle, pigs or geese that strayed onto a farmer's land would be placed in the village pound and returned to the owner only when a fee had been paid to

compensate for any damage done and a fine paid to the pound keeper.

Clymping Parish Council restored the Pound and installed benches to make a rest area for passers-by in 1984. In 1986, the Pound was chosen to display a plaque recognising the inclusion of the community of Clymping (then known as Clepinges) in the Domesday Book on its 900th anniversary.

The Pound has looked a little unloved over recent years: the commemorative plaque has rusted and the benches have come to the end of their lives.

Clymping Parish Council has agreed to finance a replacement plaque and new wood for the benches, and Kevin Foster, a Clymping resident and award-winning builder, has kindly agreed to restore the benches. With the permission of the landowner, other members of the community have recently dealt with the incursion of buddleias and brambles and will continue to keep the Pound tidy.



Dog page!

Hope all the dogs of Clymping are having a lovely summer!



Max loves the beach.



Sweet little Summer.



Poppy (left) loves to snuggle, and Summer says 'Woohoo' when she gets excited.



Benji enjoys squeaky toys and napping on the sun lounger.



Pixie loves to go for walks with her sister Penny at the Village Hall.



Bella is looking forward to her new life in Clymping and meeting the locals soon.

Anagram Dog Quiz

How many breed names can you unscramble?

REBNEDEA

GOLBULD

NACIR

NEPESIKE

MANARENOIP

GNIK LECRASH

OXF RETERIR

NASELIP

DRALABRO

VIRERETER

TESTRE

TASALINA

HOOFDUXN

SHADDCUHN

NATIS NEDRARB

LECILO

HEELSIT

OLDPOE

FATSIFM

RETAG NEAD

Answers on page 20

If you missed this issue but would like your dog to appear in our next issue, please e-mail ClympingNewsEditor@gmail.com.



THE **MARTIN SEWELL**
BUILDING COMPANY

An award-winning Chartered Building Company that has worked in the Sussex area since 1985, gaining a well-deserved reputation for professionalism, reliability, high quality craftsmanship & project management skills.

Experienced in all types of building projects, from large commercial to the sensitive renovation of listed buildings, bespoke new-builds or extensions & refurbishments.

Telephone 01243 542056
Email martin@msbc.uk
www.msbc.uk.com



Café | Roastery | Shop



Bread | Eggs | Flour | Coffee | Tea



Find us at: The Old Barn, Ford Lane, BN18 0DF

Opening Hours: 9:30am-3pm | Everyday

Click & Collect Online: www.edgumbres.co.uk

JOHN BAYLEY CARPETS

from inspiration to installation

- Free home consultation
- Free planning
- Select from 2,000 carpet and vinyl samples in the comfort of your own home
- Evening appointments – no problem
- Personal service / guaranteed expert fitting

Tel: 01903 882466
Mobile: 07810 007899
www.jbcarpets.co.uk

We come to you, so you pay less!



Unit C2, Ford Airfield Ind. Est., Ford, BN18 0HY



www.coastalcarpets-online.co.uk

Ring **01243 696740** to book
a free measure and no obligation quotation

Carpet • Vinyl • Designer Vinyl
Laminate • Wood • Rugs

10% off any flooring

£5.00 off any rug

*Free loan of samples from our showroom
Michelle & Tony look forward to showing you*

Free Measuring, Estimating
& Fitting* (T&C's apply)

NEW 'AT HOME' SERVICE

Give us a clue and we'll bring a selection to you

236 Chichester Road, Bognor, PO21 5BA
email: coastalcarpetsussex@gmail.com
www.facebook.com/coastalcarpets.sussex

*Free fitting on carpets over 15m²

Fiona Howard

WALLPAPERS



Fiona Howard wallpaper designs are all created by hand in Sussex.
'Rockpools' is inspired by low tide at our beautiful Clymping Beach.

Decorate your home with memories of our seaside
15% off all Fiona Howard wallpapers use code CLYM20

www.fionahoward.com